

Providing Homes, Building Futures

At Link Wentworth our purpose is to provide more homes and deliver quality services to enable a brighter future for people facing housing stress and homelessness.

Link Wentworth is one of the largest and fastest growing Tier 1 not-for-profit Community Housing Providers (CHPs) in Australia, managing approximately 6,400 homes with over 10,000 residents and 200 staff. Link Wentworth is a:

- Registered charity
- Specialist Disability Accommodation (SDA) Provider under the National Disability Insurance Scheme (NDIS)
- Licensed Real Estate Agent
- Specialist Homelessness Service Provider

As a CHP in NSW, we are subject to both the National Regulatory System for Community Housing and the NSW Registrar of Community Housing.

Link Wentworth is registered as a charity under the Australian Charities and Not for Profits Commission.



Financial Highlights

Revenue

\$120.7 million

Net Assets

\$296.5 million

Properties under management

6,392

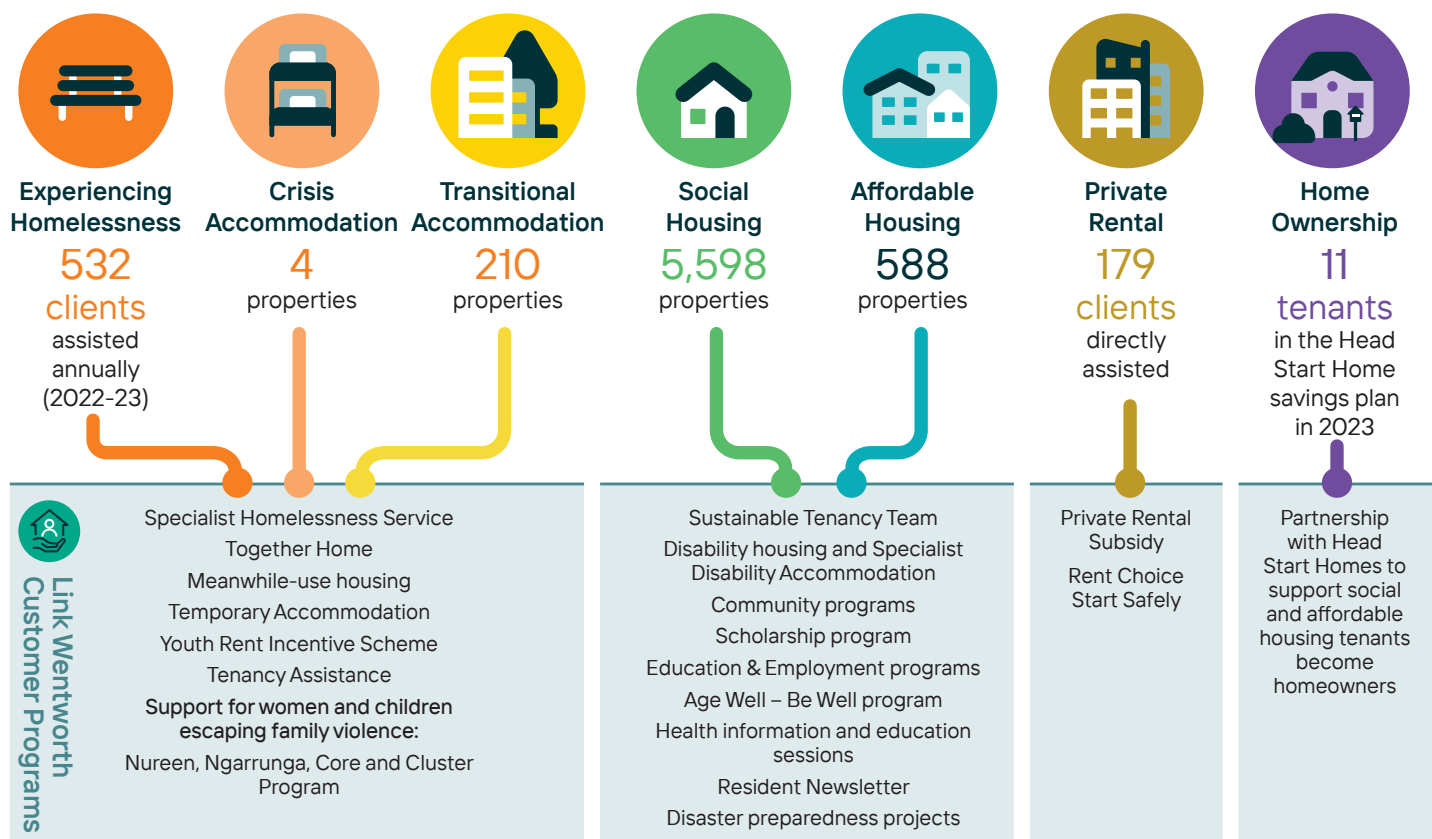
Residents

10,218

Projects in development

Location	Completion
12 Miller Street, Cammeray	Q2 25
33 Civic Way, Rouse Hill	Q3 25
37 Lakeside Cres, Queenscliff	Q3 25
135 Lachlan's Line, Macquarie Park	Q1 27
10 Killaloe Ave, Pennant Hills	Q2 26
48 Barret Ave, Thornleigh	Q4 26
49 Burdekin Rd, Schofields	Q4 26
324 Total Homes	

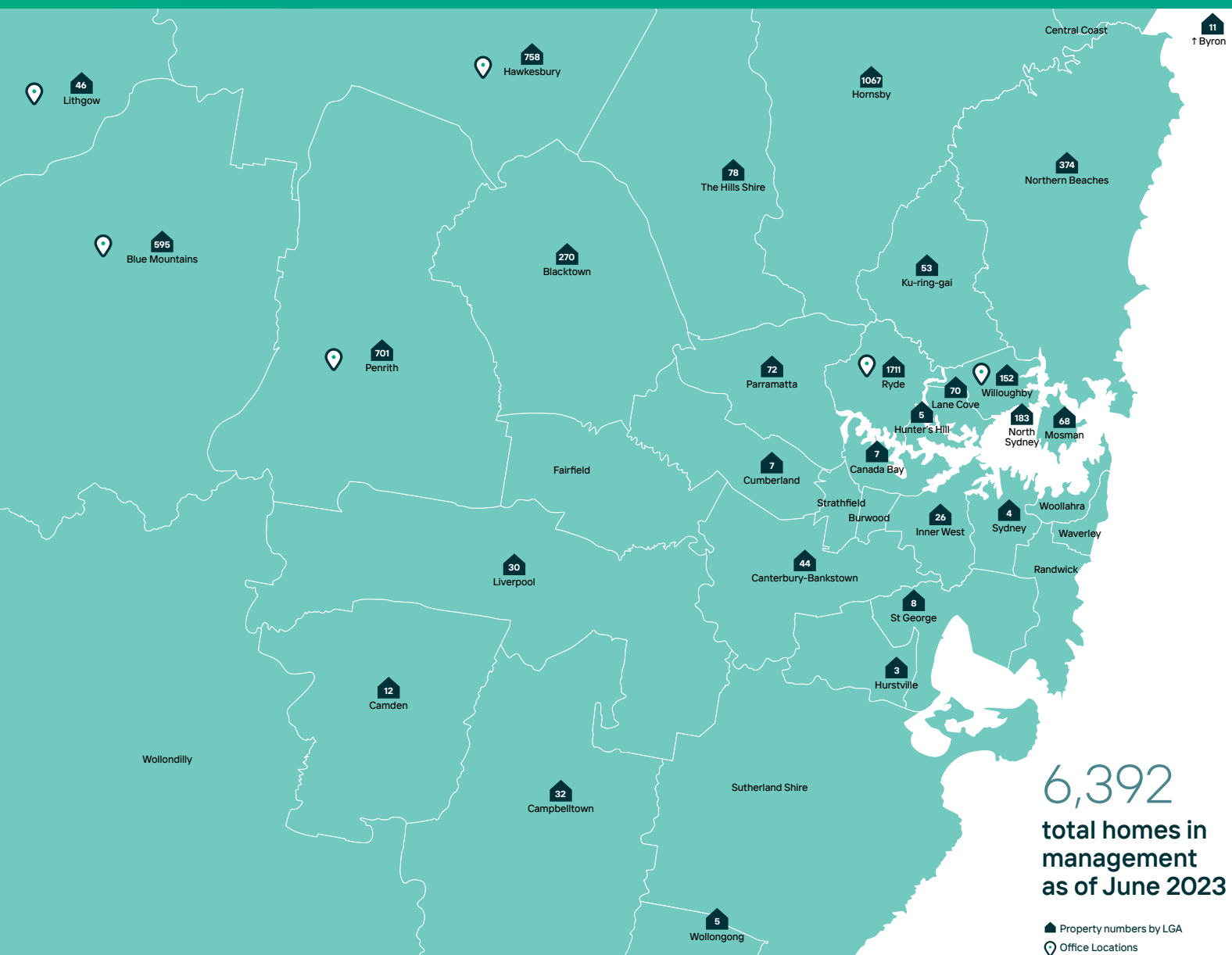
Link Wentworth Housing Continuum



We value collaboration and work closely with our partners to deliver coordinated programs and services for our customers.

Orange, Yellow, Green Northern Sydney Service System Coordination in partnership with Bridge Housing, SGCH and Women's Housing Co.

Orange, Yellow, Green, Blue, Purple Drop-in Resident and Community Support Hubs



Partnerships and collaboration are key to our success

We work closely with a range of stakeholders to deliver more housing and better outcomes for our communities. Our partners include other CHPs, government, developers, builders, investors and financiers, community groups, industry leaders and service providers. Our partnerships and collaborations are helping to build greater capacity within the sector and advocate for positive change.



Our strategic priorities are built on the belief that every person, no matter their age or income level, should have access to safe, secure housing.

Our values guide the way we work in partnership and collaborate to deliver homes and to change peoples' lives for the better. These values are:

Customer-focus:

Our customers are at the heart of everything we do

Compassion:

We genuinely care for each other and everyone we work with

Integrity:

We are committed to safety, honesty and accountability

Respect:

We value everyone we engage with and treat them fairly and equitably

Ambition:

We have the courage to lead and help drive positive social change



Contact us

Nicole Woodrow

Chief Growth and Innovation Officer

P 13 14 21

E nicole.woodrow@linkwentworth.org.au